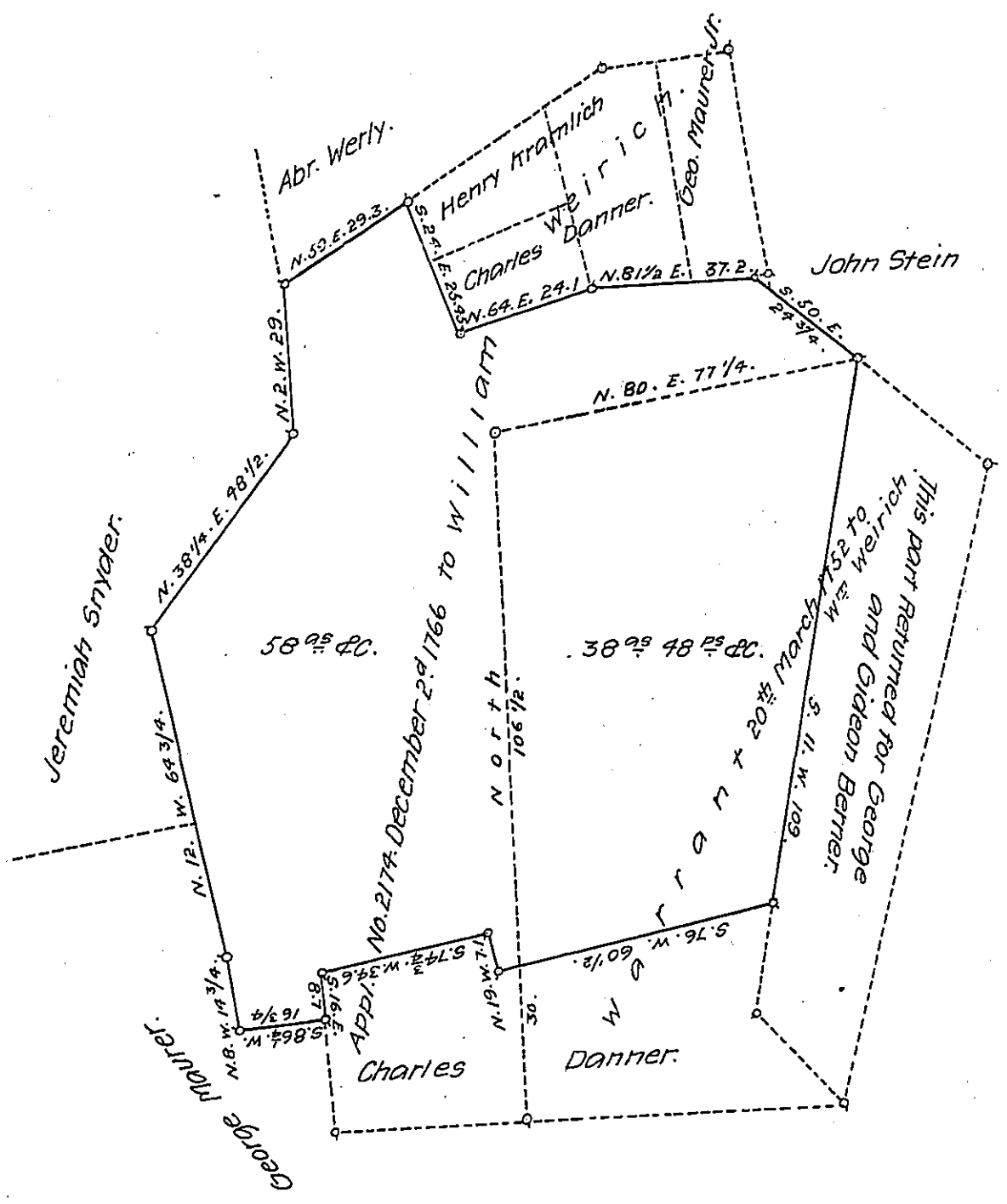


FORM NO. 1.



Draft of a tract of land situate in Weisenberg township, Lehigh County containing 96^{ac} 48^{ps} and allowance of six per cent for roads &c. Returned for Benro Werly. 58^{ac} thereof being part of 76^{ac} 70^{ps} &c. on Appl. No. 2174, dated Dec. 2^d 1766 to William Weirich and 38^{ac} 48^{ps} &c. being part of 71^{ac} 190^{ps} &c. on Warrant to William Weirich, dated 20th March. 1752.

Geo. Blant. C.S.

To R. B. Beath Esq.
Suyvor General.

IN TESTIMONY that the above is a copy of the original remaining on file in the Department of Internal Affairs of Pennsylvania, made conformably to an Act of Assembly approved the 16th day of February 1833, I have hereunto set my hand and caused the Seal of said Department to be affixed at Harrisburg, this twelfth day of July 1907.

Henry Howard
Secretary of Internal Affairs.